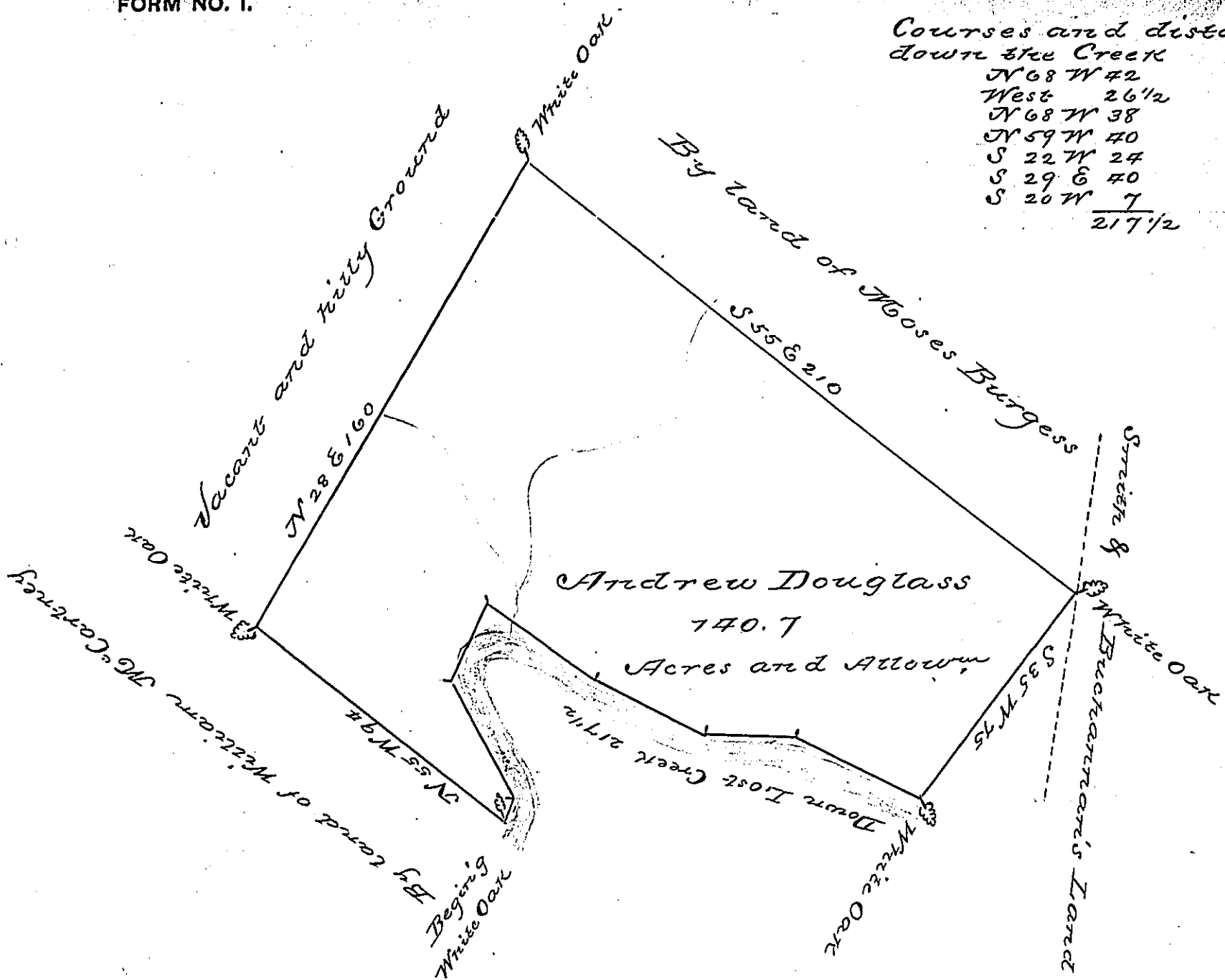


Courses and distances
 Down the Creek
 N 68 W 42
 West 26 1/2
 N 68 W 38
 N 59 W 40
 S 22 W 24
 S 29 E 40
 S 20 W 7
 217 1/2

84



The Draught of a Tract of Land situate on
 Lost Creek in the County of Cumberland con-
 taining one hundred forty acres and an half
 acre with the usual Allowance of Six Acres
 of Cent: for Roads &c. Survey'd for Andrew
 Douglass the 26th of November 1764 In Pur-
 suance of a Warrant from the Honble the Pro-
 prietaries Bearing date at Philad. the 4th Day
 of March A. D. 1755.

Wm Macclay Deputy Suror

To John Lukens Esqr Suror Genl
 of the Province of Pennsylvania
 Now Feimanagh Township Mifflin County

IN TESTIMONY that the above is a copy of the original remaining on file in
 the Department of Internal Affairs of Pennsylvania, made
 conformably to an Act of Assembly approved the 16th day of
 February, 1833, I have hereunto set my Hand and caused
 the Seal of said Department to be affixed at Harrisburg,
 this sixth day of September 1898

James W. Little
 Secretary of Internal Affairs.